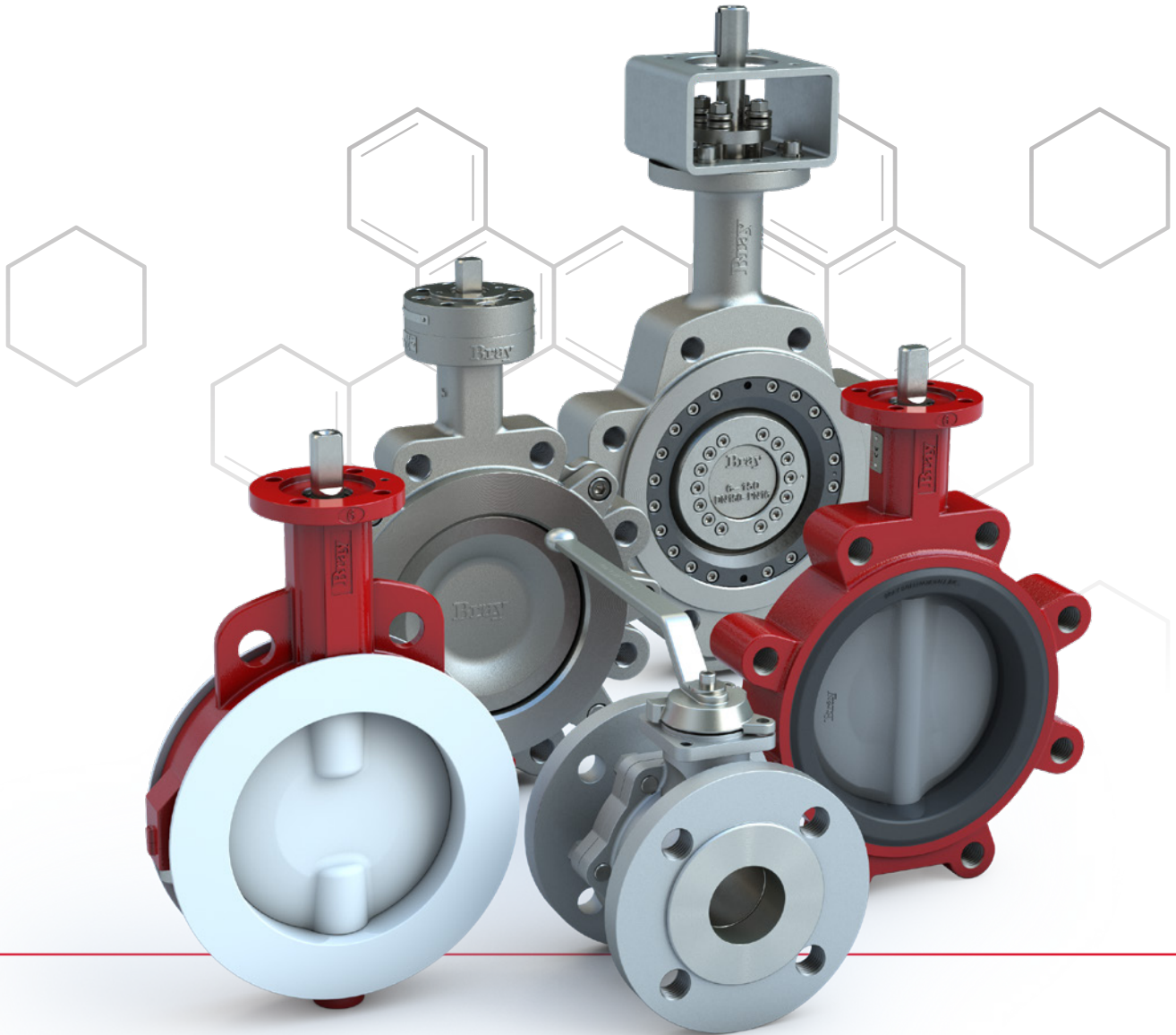




Cx LINE

OUR ELEMENT.

SOLUTIONS FOR THE CHEMICAL INDUSTRY



 **Bray**[®]

BRAY.COM

THE HIGH PERFORMANCE COMPANY

Excellence. Quality. Trust.

Explore Our Elements.

PASSION FOR SOLUTIONS...

COMMITMENT, SAFETY, RELIABILITY & SUSTAINABILITY

These elements are our passion to design, engineer, and manufacture our new Cx Line products — offering valve solutions that consistently deliver results for your unique process conditions.

All products for the Cx Line feature a digital valve identification tag which enables a link with the end user's systems. Together with the compliance of all necessary standards, these products will be your preferred choice.

DIGITAL TAG

The electronic tagging system — **Bray DIGI-ID™** — ensures that each valve is uniquely and easily identifiable by simply scanning the QR Code on the product identification tag. This allows the operator to gain instant access to all relevant product information. This solution is in accordance with the DIN EN IEC 61406 (DIN Spec 91406) standard.

Benefits of Bray DIGI-ID™



QR CODE

Engraved on Valve ID Tag
Captive and Unique
Easily Scannable



PORTAL

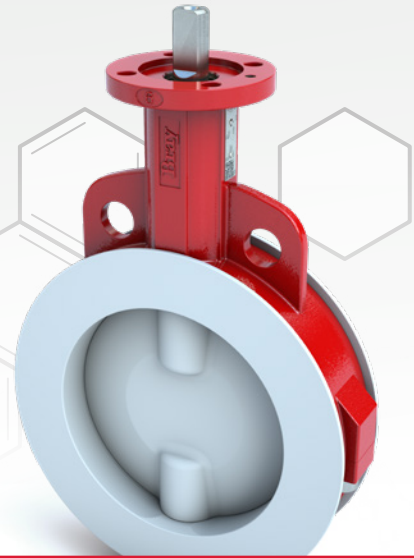
Responsive Design
Instant Access
Multi-lingual
DIN EN IEC 61406 Conformance



DOWNLOADS

Declaration of Conformity
Sales Data Sheet
Technical Sales Manual
Installation, Operation and Maintenance Manual

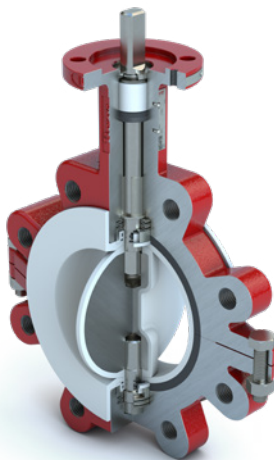
2-Cx. PTFE-Lined.



SCAN ME
FOR A CLOSER LOOK

KEY ELEMENTS

- > Live-loaded, self-adjusting stem sealing system with certified packing
- > Unique seat geometry permits lower torques and reduces seat wear
- > Seat energizer extends completely around the seat for zero leakage
- > Virgin-PTFE lining (minimum 3mm) for superior chemical resistance
- > Extended neck to allow for simplified pipe insulation



2-Cx
Lug

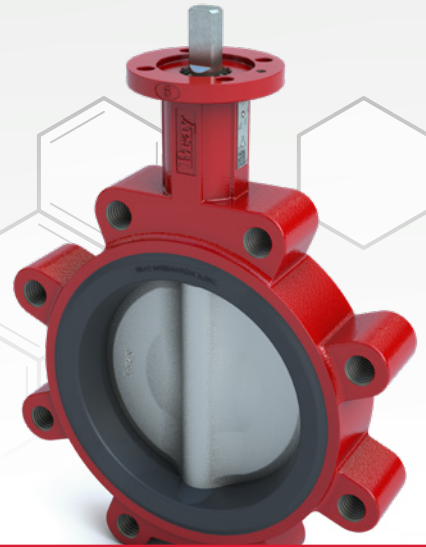
| | |
|-----------------------------------|---|
| Size Range | DN 50 to 400 |
| Temperature Range | -20°C to 200°C |
| Maximum Operating Pressure | 10 bar |
| Body Style | Wafer Lug |
| Flange Drilling | EN 1092-1: PN 10 |
| Face-to-Face | EN 558 Series 20 |
| Top Flange | ISO 5211 |
| Tightness Test | EN 12266-1: Rate A |
| Certifications | 2014/68/EU 2006/42/EC ATEX 2014/34/EU ISO 15848-1 TA-Luft VDI 2440 IEC 61508 Level 3 |
| Compliance | NE 167 AD2000 DIN EN IEC 61406 EC 1395 |

NOTE

Other sizes and specifications on request. Contact Bray for more information.



3-Cx. Resilient Seated.



SCAN ME
FOR A CLOSER LOOK

KEY ELEMENTS

- > Molded-in seat design for durability and reliability
- > Lug version allows for bi-directional sealing at full rated pressure
- > Precision profiled disc sealing edge extends the valve life by reducing seat wear
- > Upper and lower stem bearings reduce operating torque and increase reliability in high cycle applications
- > Reduction in torque enables optimized actuator selection resulting in cost savings over the valve's lifetime
- > Extended neck to allow for simplified pipe insulation



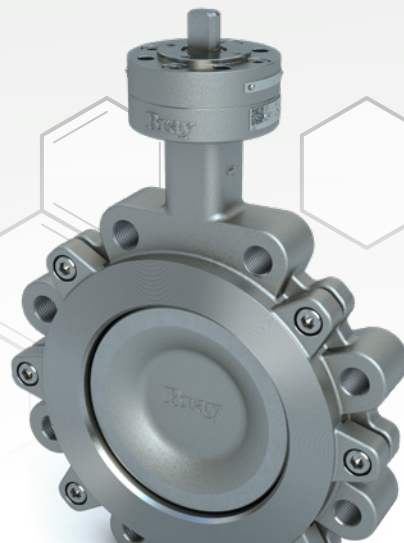
3-Cx
Wafer

| | |
|-----------------------------------|---|
| Size Range | DN 50 to 600 |
| Temperature Range | -20°C to 121°C |
| Maximum Operating Pressure | 16 bar |
| Body Style | Wafer Lug |
| Flange Drilling | EN 1092-1: PN 10 PN 16 |
| Face-to-Face | EN 558 Series 20 |
| Top Flange | ISO 5211 |
| Tightness Test | EN 12266-1: Rate A |
| Certifications | 2014/68/EU 2006/42/EC ATEX 2014/34/EU ISO 15848-1 TA-Luft VDI 2440 IEC 61508 Level 3 |
| Compliance | NE 167 AD2000 DIN EN IEC 61406 EC 1935 |

NOTE

Other sizes and specifications on request. Contact Bray for more information.

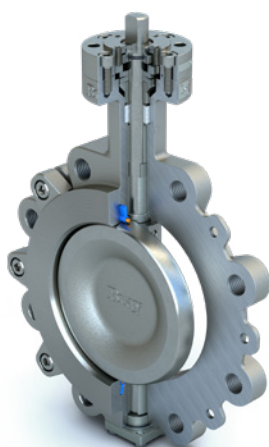
4-Cx. Double Offset.



SCAN ME
FOR A CLOSER LOOK

KEY ELEMENTS

- > Designed to deliver quality, value, and reliability in the most demanding applications
- > Adjustable live-loaded stem sealing system with certified packing
- > Double offset geometry reduces seat wear and extends valve service life
- > Dead-end service, with bidirectional sealing and uninterrupted flange surface
- > High strength, anti-blowout one-piece stem
- > Extended neck to allow for simplified pipe insulation



4-Cx
Lug

| | |
|--------------------------|---|
| Size Range | DN 80 to 400 |
| Temperature Range | Carbon Steel: -10°C to 260°C |
| | Stainless Steel: -29°C to 260°C |
| Pressure Rating | PN 10 16 25 |
| Body Style | Wafer Lug |
| Flange Drilling | EN 1092-1 |
| Face-To-Face | EN 558 Series 20 Series 25 |
| Top Flange | ISO 5211 |
| Tightness Test | EN 12266-1: Rate A |
| Certifications | 2014/68/EU 2006/42/EC ATEX 2014/34/EU ISO 15848-1 TA-Luft VDI 2440 IEC 61508 Level 3 |
| Compliance | NE 167 AD2000 DIN EN IEC 61406 EC 1935 |

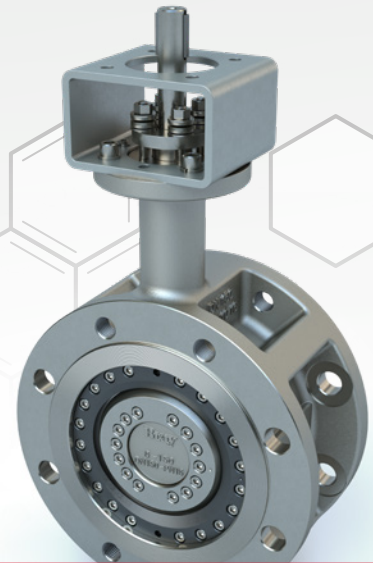
NOTE

Other sizes and specifications on request. Contact Bray for more information.



Tri Lok[®]-Cx.

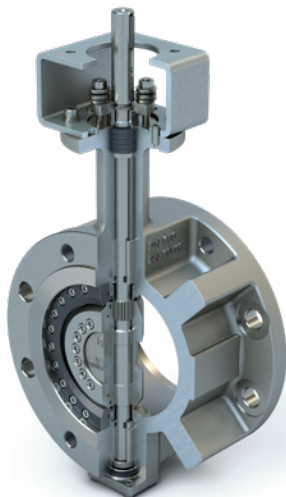
Triple Offset.



SCAN ME
 FOR A CLOSER LOOK

KEY ELEMENTS

- > Designed for zero leakage, high reliability, and easy maintenance
- > Adjustable live-loaded stem sealing system with certified packing
- > Field replaceable sealing components
- > Engineered for critical service applications
- > Metal-to-metal sealing system is inherently fire-safe and capable of meeting zero-leakage requirements from critical service conditions
- > Splined stem connection offers maximum strength and minimizes hysteresis
- > Dead-end service, with bidirectional sealing and uninterrupted flange surface
- > Extended neck to allow for simplified pipe insulation



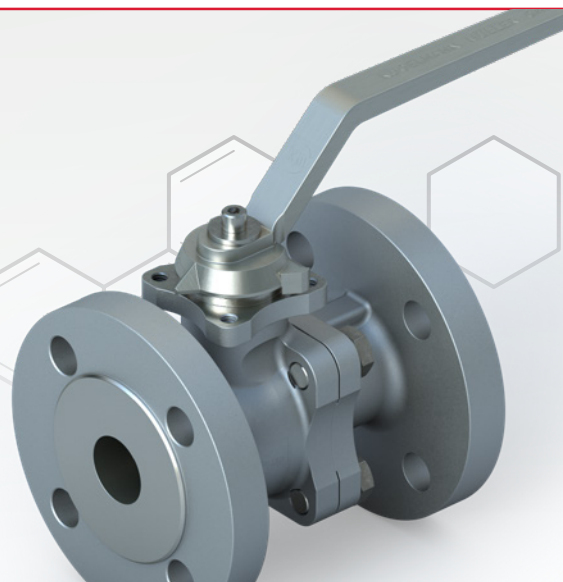
Tri Lok[®]-Cx
 Double Flange

| | |
|--------------------------|---|
| Size Range | DN 80 to 400 |
| Temperature Range | Carbon Steel: -10°C to 450°C |
| | Stainless Steel: -60°C to 400°C |
| Pressure Rating | PN 10 25 40 |
| Body Style | Lug Double Flange |
| Flange Drilling | EN 1092-1 |
| Face-To-Face | Lug: EN 558 Series 16 |
| | Double Flange: EN 558 Series 13 |
| Top Flange | ISO 5211 |
| Tightness Test | EN 12266-1: Rate A |
| Certifications | 2014/68/EU 2006/42/EC ATEX 2014/34/EU API 607 ISO 15848-1 TA-Luft VDI 2440 IEC 61508 Level 3 |
| Compliance | NE 167 AD2000 DIN EN IEC 61406 |

NOTE

Other sizes and specifications on request. Contact Bray for more information.

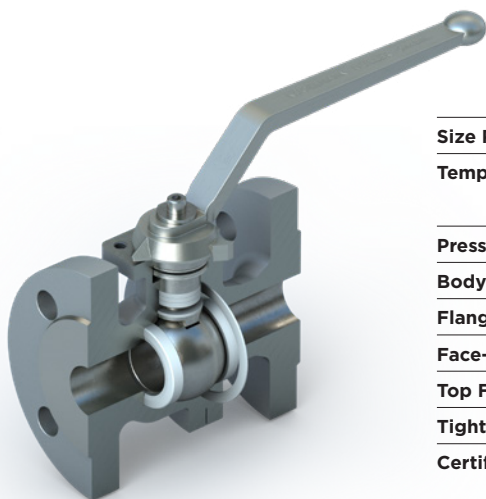
KM20/21. Flanged Ball Valve.



SCAN ME
FOR A CLOSER LOOK

KEY ELEMENTS

- > Designed for maximum safety and durability
- > Adjustable live-loaded PTFE stem sealing or O-Ring sealing system with certified packing
- > Easy to maintain, fully repairable, and replaceable components
- > Robust construction with blowout proof stem design
- > Antistatic design as standard, to ensure operational safety
- > Various configuration options available, such as Fire-Safe, High-Temperature or Heat-Jacketed



KM21
PTFE Packing

| | |
|--------------------------|---|
| Size Range | DN 15 to 200 |
| Temperature Range | PTFE: -60°C to 200°C |
| | O-Ring: -25°C to 200°C |
| Pressure Rating | PN 10 16 25 40 |
| Body Style | 2-piece flanged |
| Flange Drilling | EN 1092-1 |
| Face-To-Face | EN 558 Series 1 Series 27 |
| Top Flange | ISO 5211 |
| Tightness Test | EN 12266-1: Rate A |
| Certifications | 2014/68/EU 2006/42/EC ATEX 2014/34/EU ISO 10494 ISO 15848-1 TA-Luft VDI 2440 IEC 61508 Level 3 |
| Compliance | NE 167 AD2000 DIN EN IEC 61406 EC 1935 |

NOTE

Other sizes and specifications on request. Contact Kugelhahn Müller for more information.



SINCE 1986, BRAY HAS PROVIDED FLOW CONTROL SOLUTIONS FOR A VARIETY OF INDUSTRIES AROUND THE WORLD.

VISIT **BRAY.COM** TO LEARN MORE ABOUT BRAY PRODUCTS AND LOCATIONS NEAR YOU.

GLOBAL HEADQUARTERS

Bray International, Inc.

13333 Westland East Blvd.
Houston, Texas 77041
Tel: +1.281.894.5454

BENELUX

Bray Controls Benelux B.V.

Joulestraat 8
Heerhugowaard 1704 PK
The Netherlands
T: +31 72 572 1410
E: bcbe.sales@bray.com

DUBAI

Bray Controls Middle East DMCC

Office 2004 & 2005, One Lake Plaza,
Cluster T, Jumeirah Lake Towers,
Dubai, United Arab Emirates
T: +971 4 2955 696
E: bcme.mro@bray.com

FRANCE

Bray Controls France S.A.R.L.

16 Rue Irène Joliot Curie
Eybens 38320
France
T: +33 4 76 06 55 85
E: bcfr.sales@bray.com

GERMANY

Bray Armaturen & Antriebe GmbH

Halskestraße 25
47877 Willich
Germany
T: +49 2154 88 75-0
E: sales.germany@bray.com

POLAND

Bray Controls Poland Sp. z o.o.

Unii Europejskiej 65
Oświęcim 32-600
Poland
T: +48 33 842 1968
E: biuro@bray.com

SPAIN

Bray Controls Iberica

Calle del Dr Esquerdo, 217. Local 4
Planta Baja, Madrid 28007
Spain
T: +34 91 104 4855
E: sales.iberica@bray.com

UK

Bray Controls (UK) Limited

16/18 Fountain Crescent
Inchinnan Business Park
Inchinnan PA4 9RE
United Kingdom
T: +44 141 812 5199
E: bcuk.sales@bray.com

All statements, technical information, and recommendations in this bulletin are for general use only. Consult Bray representatives or factory for the specific requirements and material selection for your intended application. The right to change or modify product design or product without prior notice is reserved. Patents issued and applied for worldwide. Bray® is a registered trademark of Bray International, Inc.

© 2022 BRAY INTERNATIONAL. ALL RIGHTS RESERVED. BRAY.COM

EN_OVW_CxLINE_20240523



THE HIGH PERFORMANCE COMPANY

BRAY.COM