

---

**SERIES 755**

# **BIDIRECTIONAL URETHANE LINED SLURRY VALVES**

2" to 24" 150psi (10bar), 240psi (16bar), 300psi (20bar)



---

 **Bray**<sup>®</sup>

BRAY.COM

THE HIGH PERFORMANCE COMPANY

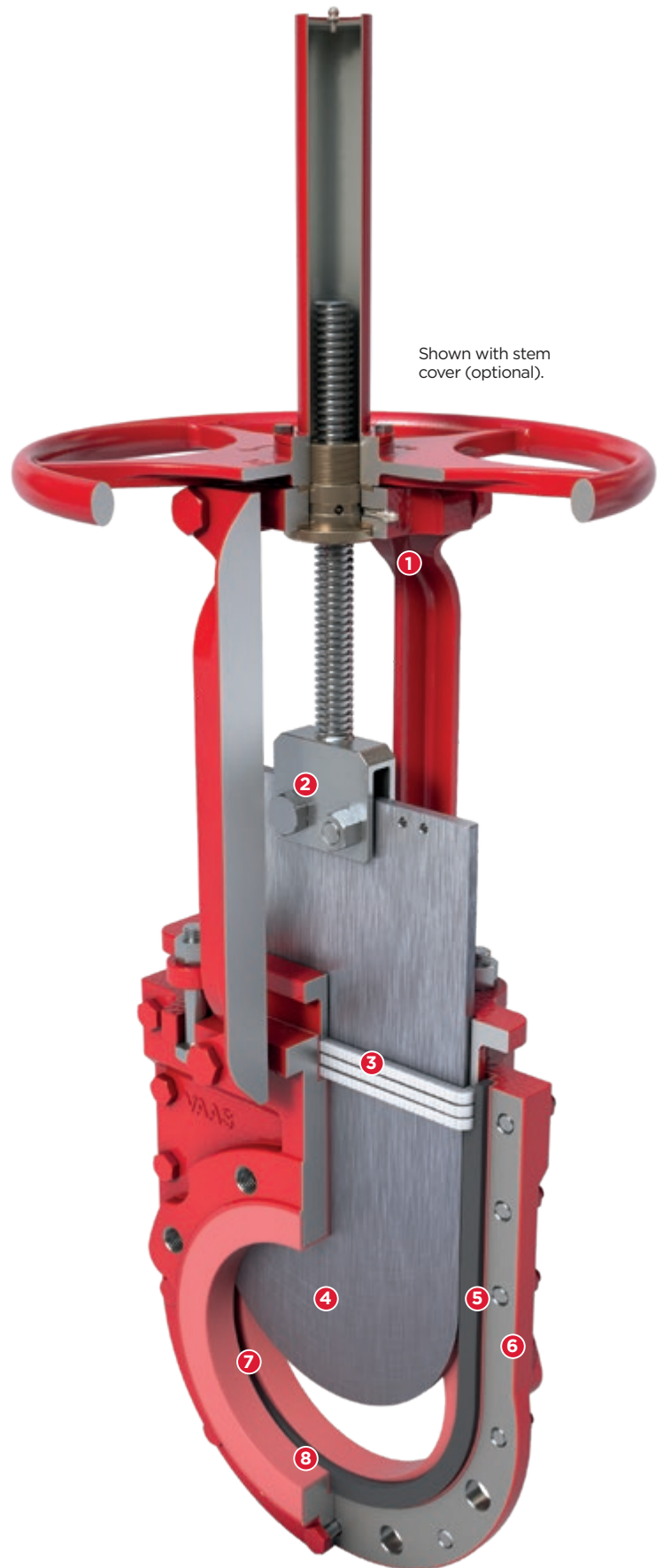
## FEATURES & BENEFITS

### DESIGN FEATURES

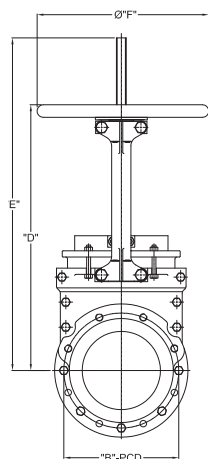
The Bray Series 755 features a field replaceable polyurethane bore liner making it an economical solution for abrasive applications. Utilizing the same robust steel reinforced perimeter seat as the Series 752 enables bidirectional zero leakage shutoff.

The replaceable steel reinforced perimeter seat is mechanically retained between both halves of the two-piece bolted body providing unsurpassed performance in the most demanding applications.

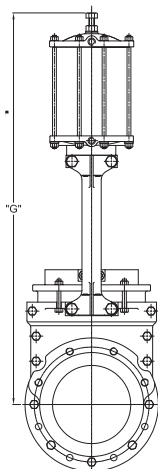
- 1 Designed for easy, quick conversion between manual and pneumatic actuation. Featuring a lubricant injection port for continuous, smooth operation with minimal maintenance.
- 2 Clevis design and horizontal bolting stabilizes gate ensuring proper alignment.
- 3 Standard multi-layer square packing provides exceptional gland sealing.
- 4 Unrestricted flow path with minimal pressure drop achieved through full port valve design.
- 5 Replaceable steel reinforced elastomer perimeter seat ensures bidirectional zero leakage shutoff.
- 6 Two-piece bolted body for easy maintenance and seat replacement.
- 7 Polyurethane liner or rubber liner bonded to both halves of the body (755P/755R) completely protects valve body from media.
- 8 Polyurethane bore liner or rubber liner provides total protection from abrasive media.



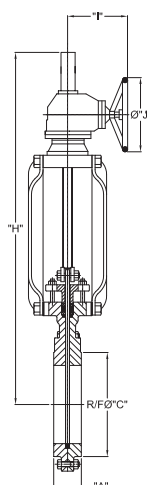
### Direct Mounted Handwheel



### Pneumatic Actuator



### Bevel Gear



Consult factory for hydraulic and electric actuators dimensions.

#### DIMENSIONS (inches)

| NPS | A    | B     | C     | D     | E     | F     | G     | H     | I     | J     |
|-----|------|-------|-------|-------|-------|-------|-------|-------|-------|-------|
| 2   | 1.89 | 4.76  | 3.62  | 13.33 | 15.87 | 7.99  | 18.41 | --    | --    | --    |
| 3   | 2.01 | 6.02  | 5.00  | 15.71 | 18.49 | 7.99  | 21.84 | --    | --    | --    |
| 4   | 2.01 | 7.52  | 6.18  | 17.73 | 22.73 | 10.00 | 25.24 | --    | --    | --    |
| 6   | 2.24 | 9.53  | 8.50  | 22.36 | 28.74 | 11.77 | 33.41 | --    | --    | --    |
| 8   | 2.76 | 11.77 | 10.63 | 24.95 | 35.28 | 15.98 | 40.06 | --    | --    | --    |
| 10  | 2.76 | 14.25 | 12.76 | 31.51 | 40.67 | 15.98 | 50.07 | 44.27 | 12.05 | 20.00 |
| 12  | 2.99 | 17.01 | 14.76 | --    | --    | --    | 55.72 | 51.61 | 12.05 | 20.00 |
| 14  | 2.99 | 18.74 | 16.26 | --    | --    | --    | 59.99 | 56.59 | 12.05 | 20.00 |
| 16  | 3.50 | 21.26 | 18.50 | --    | --    | --    | 70.46 | 62.83 | 12.99 | 20.00 |
| 18  | 3.50 | 22.76 | 21.00 | --    | --    | --    | 77.64 | 69.59 | 12.99 | 20.00 |
| 20  | 4.49 | 25.00 | 22.99 | --    | --    | --    | 86.14 | 81.10 | 13.46 | 20.00 |
| 24  | 4.49 | 29.53 | 27.24 | --    | --    | --    | 99.08 | 94.15 | 13.46 | 20.00 |

#### DIMENSIONS (MILLIMETERS)

| DN  | A   | B   | C   | D   | E    | F   | G    | H    | I   | J   |
|-----|-----|-----|-----|-----|------|-----|------|------|-----|-----|
| 50  | 48  | 121 | 92  | 379 | 403  | 203 | 510  | --   | --  | --  |
| 80  | 51  | 153 | 127 | 419 | 470  | 203 | 575  | --   | --  | --  |
| 100 | 51  | 191 | 157 | 510 | 577  | 254 | 701  | --   | --  | --  |
| 150 | 57  | 242 | 216 | 622 | 730  | 299 | 903  | --   | --  | --  |
| 200 | 70  | 299 | 270 | 703 | 896  | 406 | 1086 | --   | --  | --  |
| 250 | 70  | 362 | 324 | 800 | 1033 | 406 | 1272 | 1125 | 306 | 508 |
| 300 | 76  | 432 | 375 | --  | --   | --  | 1415 | 1311 | 306 | 508 |
| 350 | 76  | 476 | 413 | --  | --   | --  | 1524 | 1437 | 306 | 508 |
| 400 | 89  | 540 | 470 | --  | --   | --  | 1790 | 1596 | 330 | 508 |
| 450 | 89  | 578 | 534 | --  | --   | --  | 1972 | 1768 | 330 | 508 |
| 500 | 114 | 635 | 584 | --  | --   | --  | 2188 | 2060 | 342 | 508 |
| 600 | 114 | 750 | 692 | --  | --   | --  | 2517 | 2392 | 342 | 508 |

Dimensions are approximate and subject to change. Consult factory for certified drawings. Above table is applicable for 10-16 bar. For 20 bar consult factory.

#### WEIGHTS (lbs)

| Size (in.)     | 2  | 3  | 4   | 6   | 8   | 10  | 12  | 14  | 16  | 18   | 20   | 24   |
|----------------|----|----|-----|-----|-----|-----|-----|-----|-----|------|------|------|
| Handwheel      | 37 | 44 | 53  | 88  | 139 | 181 | --  | --  | --  | --   | --   | --   |
| Pneumatic Act. | 55 | 73 | 106 | 128 | 205 | 247 | 428 | 721 | 937 | 1151 | 1318 | 1554 |
| Gear Operator  | -- | -- | --  | --  | 194 | 254 | 309 | 474 | 664 | 884  | 1076 | 1305 |

#### WEIGHTS (kg)

| Size (mm)      | 50 | 80 | 100 | 150 | 200 | 250 | 300 | 350 | 400 | 450 | 500 | 600 |
|----------------|----|----|-----|-----|-----|-----|-----|-----|-----|-----|-----|-----|
| Handwheel      | 17 | 20 | 24  | 40  | 63  | 82  | --  | --  | --  | --  | --  | --  |
| Pneumatic Act. | 25 | 33 | 48  | 58  | 93  | 112 | 194 | 327 | 425 | 522 | 598 | 705 |
| Gear Operator  | -- | -- | --  | --  | 88  | 115 | 140 | 215 | 301 | 401 | 488 | 592 |

\*Approximate weight shown, consult factory for additional configurations

#### STANDARD CONSTRUCTION

|          | CF8                         | CF8M   | WCB    | DI     |
|----------|-----------------------------|--------|--------|--------|
| Body     | CF8                         | CF8M   | WCB    | DI     |
| Gate     | 304                         | 316    | 304    | 304    |
| Seat     | Buna-N                      | Buna-N | Buna-N | Buna-N |
| Stem     | 304                         | 304    | 304    | 304    |
| Gland    | 304                         | 304    | 304    | 304    |
| Packing  | PTFE                        | PTFE   | PTFE   | PTFE   |
|          | Impregnated Synthetic Fiber |        |        |        |
| Topworks | Steel                       | Steel  | Steel  | Steel  |

#### SPECIFICATIONS

|            |                          |
|------------|--------------------------|
| Size Range | 2" to 24" (50 - 600mm)   |
| Pressure   | 150psi (10bar)           |
| Rating     | 240psi (16bar)           |
|            | 300psi (20bar)           |
| Body Style | Two-piece bolted (Wafer) |

#### STANDARDS

|               |                                      |
|---------------|--------------------------------------|
| Design        | Manufacturer Standard                |
| Testing       | MSS SP-151                           |
| Face-to-Face  | MSS SP-81<br>(150psi, 240psi models) |
| Certification | Canadian CRN                         |
| Drilling*     | ASME B16.5 CL150                     |

\*Additional drilling options available. Consult factory for availability.

#### ACTUATOR OPTIONS

|  |
|--|
| Direct Mounted Handwheel Standard (2"-10") |
| Bevel Gear Standard (12"-24")              |
| Pneumatic                                  |
| Hydraulic                                  |
| Electric                                   |

#### BODY OPTIONS

|                      |
|----------------------|
| CF3M Stainless Steel |
| SAF 2205 Duplex      |
| SAF 2507 Duplex      |

#### GATE OPTIONS

|                               |
|-------------------------------|
| 304, 316, 317 Stainless Steel |
| SAF 2507 Duplex               |
| SAF 2205 Duplex               |
| 17-4PH Stainless Steel        |
| Hastelloy® C                  |
| Monel®                        |

#### SEAT OPTIONS

|        |                         |
|--------|-------------------------|
| Buna-N | -35°-194°F / -37°-90°C  |
| EPDM   | -65°-248°F / -54°-120°C |
| Viton® | -15°-392°F / -26°-200°C |

#### PACKING OPTIONS

|                                  |             |
|----------------------------------|-------------|
| PTFE impregnated synthetic fiber | 232°C/450°F |
| PTFE w/Buna-N Quad Seal          | 90°C/194°F  |
| PTFE w/Viton® Quad Seal          | 200°C/392°F |

Additional material options may be available upon request. Consult factory for availability.

---

SINCE 1986, BRAY HAS PROVIDED FLOW CONTROL SOLUTIONS FOR A VARIETY OF INDUSTRIES AROUND THE WORLD.

VISIT [BRAY.COM](https://www.bray.com) TO LEARN MORE ABOUT BRAY PRODUCTS AND LOCATIONS NEAR YOU.

## **HEADQUARTERS**

**Bray International, Inc.**

13333 Westland East Blvd.

Houston, Texas 77041

Tel: +1.281.894.5454

All statements, technical information, and recommendations in this bulletin are for general use only. Consult Bray representatives or factory for the specific requirements and material selection for your intended application. The right to change or modify product design or product without prior notice is reserved. Patents issued and applied for worldwide. Bray® is a registered trademark of Bray International, Inc.

© 2022 BRAY INTERNATIONAL, INC. ALL RIGHTS RESERVED. [BRAY.COM](https://www.bray.com)

EN\_S755\_KGV\_20221010

---



**THE HIGH PERFORMANCE COMPANY**

**BRAY.COM**