
VALVE SOLUTIONS FOR COAL MINING

GLOBAL SPECIFICATIONS



 **Bray**[®]

BRAY.COM

THE HIGH PERFORMANCE COMPANY

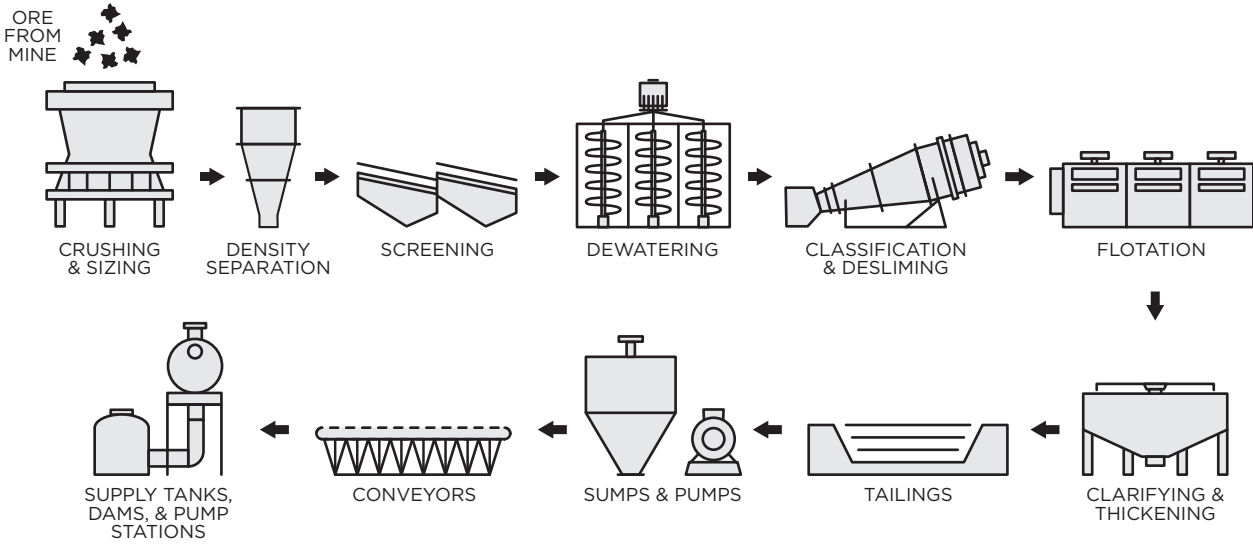
OUR PRODUCTS IN COAL MINING

Bray is a leading provider of high-quality valves for demanding applications in coal mining, including aggressive slurries in processing operations. We offer a comprehensive range of valves, actuators, and controls designed to maximize productivity — empowering you to streamline your mining and processing operations.

PRODUCT	BRAND	TYPE	MODEL	PROCESS												
				CRUSHING & SIZING	DENSITY SEPARATION	SCREENING	DEWATERING	CLASSIFICATION & DESLIMING	FLOTATION	CLARIFYING & THICKENING	TAILINGS	SUMPS & PUMPS	CONVEYORS	SUPPLY TANKS, DAMS & PUMP STATIONS		
BUTTERFLY VALVES	Bray	High Performance	McCannalok					■								
		Resilient Seated	Series 3W/3L	■		■	■		■	■	■	■			■	
		Resilient Seated	Series 3A		■											■
KNIFE GATE VALVES	Bray SlurryShield®	Bidirectional	768, 767, 762		■			■	■		■				■	
	Bray	Unidirectional	940		■			■	■		■				■	
BALL VALVES	Bray	3-piece	Series 7000	■				■		■	■				■	
		1-piece	Series 40	■				■		■	■				■	
		3-piece	Series 500E	■				■		■	■				■	
ROTARY CONTROL VALVES	Bray	Segmented Ball	Series 19/19L	■											■	
		V-port	Series F15/F30						■		■					
		Butterfly (Lined)	Series 39L						■		■					
CHECK VALVES	Rite	Swing Check	210					■				■			■	
	SlurryTuff	Air Release/ Vacuum Break	EZI-VAC											■	■	
		Ball Check	Maxi-Check												■	
		Ball Check Isolation	Maxi-Check I												■	

NOTE: For more product information and downloads, visit BRAY.COM.

COAL MINING PROCESS



BUTTERFLY VALVES



McCannalok Series

HIGH PERFORMANCE

Size Range

NPS 2 to 66 | DN 50 to 1500

Temperature Range

-320°F to 842°F | -196°C to 450°C

Pressure Rating

ASME Class 150, 300, 600
PN 10, 16, 25, 40, 63, 100

Body Style

Wafer | Lug | Double Flanged



Series 3W/3L

RESILIENT SEATED (1-PIECE BODY)

Size Range

NPS 2 to 24 | DN 50 to 600

Temperature Range

-20°F to 250°F | -29°C to 121°C

Maximum Allowable Operating Pressure

Up to 250 psi | Up to 17 bar

Body Style

Wafer | Lug



Series 3A/3AH

RESILIENT SEATED

Size Range

NPS 2 to 20 | DN 50 to 500

Temperature Range

-20°F to 400°F | -29°C to 204°C

Maximum Allowable Operating Pressure

Up to 250 psi | Up to 17 bar

Body Style

Double Flanged

KNIFE GATE VALVES



Series 762

BIDIRECTIONAL (SLURRYSHIELD®)

Size Range

NPS 3 to 48 | DN 80 to 1200

Temperature Range¹

-65° to 302°F | -54° to 150°C

Maximum Allowable Operating Pressure²

Up to 290 psi | Up to 20 bar

Body Style

2-piece Bolted (Flanged)



Series 768

BIDIRECTIONAL (SLURRYSHIELD®)

Size Range

NPS 2 to 24 | DN 50 to 600

Temperature Range¹

-65° to 248°F | -54° to 120°C

Maximum Allowable Operating Pressure²

Up to 150 psi | Up to 10 bar

Body Style

2-piece Bolted (Wafer)



Series 767

BIDIRECTIONAL (SLURRYSHIELD®)

Size Range

NPS 3 to 36 | DN 80 to 900

Temperature Range¹

-65° to 248°F | -54° to 120°C

Maximum Allowable Operating Pressure

Up to 740 psi | Up to 51 bar

Body Style

2-piece Bolted



Series 940

UNIDIRECTIONAL

Size Range

NPS 2 to 24 | DN 50 to 600

Temperature Range¹

-235°F to 500°F | -148°C to 260°C

Maximum Allowable Operating Pressure

Up to 150 psi | Up to 10bar

Body Style

1-piece (Lug)

NOTES:

1 Temperature range depends on seat material.

2 Higher pressures are available with alternate gate materials.

BALL VALVES

3-PIECE



Series 7000

Size Range
NPS ¼ to 12 | DN 8 to 300

Temperature Range
-50°F to 550°F | -46°C to 287°C

Maximum Allowable Operating Pressure
NPS ¼ to 4: 1000 psi WOG | DN 8 to 100: 69 bar
NPS 6 to 12: 400 psi WOG | DN 150 to 300: 27 bar

End Connection
Flanged | Butt Weld | Socket Weld | Extended Weld | Threaded

1-PIECE (REDUCED PORT)



Series 40

Size Range
NPS ¼ to 2 | DN 8 to 50

Temperature Range
-50°F to 450°F | -46°C to 232°C

Maximum Allowable Operating Pressure
1000 psi WOG | 69 bar

End Connection
Threaded

3-PIECE



Series 500E

Size Range
NPS ¼ to 4 | DN 8 to 100

Temperature Range
-50°F to 450°F | -46°C to 232°C

Maximum Allowable Operating Pressure
1000 psi WOG | 69 bar

End Connection
Socket Weld | Threaded

ROTARY CONTROL VALVES

SEGMENTED BALL VALVE



Series 19/19L

Size Range
NPS 1 to 16 | DN 25 to 400

Temperature Range
-50°F to 500°F | -46°C to 260°C

Pressure Rating
ASME Class 150, 300, 600
PN 10, 16, 25, 40

End Connection
Flanged | Flangeless (Wafer)

V-PORT BALL VALVE



V-Control

Size Range
NPS ½ to 12 | DN 15 to 300

Temperature Range
-50°F to 650°F | -46°C to 343°C

Pressure Rating
ASME Class 150, 300, 600
PN 10, 16, 25, 40

End Connection
Flanged | Threaded | Socket Weld | Butt Weld

BUTTERFLY VALVE (LINED)



Series 39

Size Range
NPS 2 to 20 | DN 50 to 500

Temperature Range
-20°F to 300°F | -29°C to 150°C

Maximum Allowable Operating Pressure
230 psi | 16 bar

Body Style
Wafer (Short & Long Body) | Flanged (Long Body)

CHECK VALVES



EZI-Vac

AIR RELEASE/VACUUM BREAK

Size Range
NPS 1 to 16 | DN 25 to 400

Temperature Range
Up to 176°F | Up to 80°C

Pressure Rating
ANSI Class 150, 300, 600

End Connection
Flanged (or as required)



MAXI-Check H, MAXI-Check I

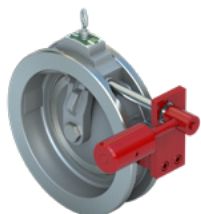
BALL CHECK & BALL CHECK ISOLATION

Size Range
NPS 3 to 30 | DN 80 to 750

Temperature Range
Up to 176°F | Up to 80°C

Pressure Rating
ANSI Class 150, 300, 600, 900

End Connection
Flanged (or as required)



205, 210

SWING CHECK

Size Range
NPS 1 to 60 | DN 25 to 1500

Temperature Range
-20°F to 450°F | -29°C to 232°C

Pressure Rating
ASME Class 125, 150, 300, 600, 900, 1500
PN 10, 16, 25, 40, 64

Body Style
Wafer | Flanged | Ring Type Joint

ACTUATORS

Series 92/93



PNEUMATIC RACK & PINION

Torque Output Range
Up to 44,130 lb-in | Up to 4,986 N m

Temperature Range
-40°F to 350°F | -40°C to 149°C

Pressure Ratings
Up to 140 psi | Up to 10 bar

Series 70



ELECTRIC

Torque Output Range
300 to 18,000 lb-in | 34 to 2034 N m

Temperature Range
-20°F to 150°F | -29°C to 65°C

Voltages
120, 230 VAC 50/60 Hz, 1-Phase |
24V: AC/DC

Series 04, 05



MANUAL GEAR

Torque Output Range
2,000 to 70,000 lb-in | 226 to 7,900 N m

Temperature Range
Up to 250°F | Up to 120°C

CONTROLS



**VALVE STATUS
MONITOR**
Series 5A | 5B | 5C



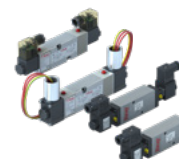
**PROXIMITY
SENSOR**
Series 54



**SMART
POSITIONER**
Series 6A



**PNEUMATIC
POSITIONER**
Series 6P



SOLENOID
Series 60 | 63



**FILTER
REGULATOR**
Series 55

SINCE 1986, BRAY HAS PROVIDED FLOW CONTROL SOLUTIONS FOR A VARIETY OF INDUSTRIES AROUND THE WORLD.

VISIT **BRAY.COM** TO LEARN MORE ABOUT BRAY PRODUCTS AND LOCATIONS NEAR YOU.

HEADQUARTERS

Bray International, Inc.

13333 Westland East Blvd.

Houston, Texas 77041

Tel: +1.281.894.5454

All statements, technical information, and recommendations in this bulletin are for general use only. Consult Bray representatives or factory for the specific requirements and material selection for your intended application. The right to change or modify product design or product without prior notice is reserved. Patents issued and applied for worldwide. Bray® is a registered trademark of Bray International, Inc.

© 2023 BRAY INTERNATIONAL. ALL RIGHTS RESERVED. BRAY.COM

EN_AG_Mining_Coal_20231016



THE HIGH PERFORMANCE COMPANY

BRAY.COM