

SPECIAL APPLICATION SERIES SA2 LIMIT SWITCH CHECK VALVE ACCESSORY



OVERVIEW

The Bray Series SA2 check valve accessory is designed to send a signal for remote indication for flow & valve position in automated control systems. If two are installed the first shows the closed position, the second the fully opened valve. (A partially opened valve is subject to premature wear).

SPECIFICATIONS

Size Range	NPS 2" to 60" 50mm to 1500mm
Temperature Range	Pending Model Selected
Operating Pressure	Pending Model Selected
Body Style	One-Piece Flanged or Wafer Body
Compatibility	Bray 205, 210, or 211 Series
Leakage Rate	API 598

APPLICATIONS

- > Automated control systems

MEDIA

- > Dry Chlorine (Gas or Liquid)
- > Gases
- > Hydrogen
- > Oxygen
- > Water

DESIGN FEATURES

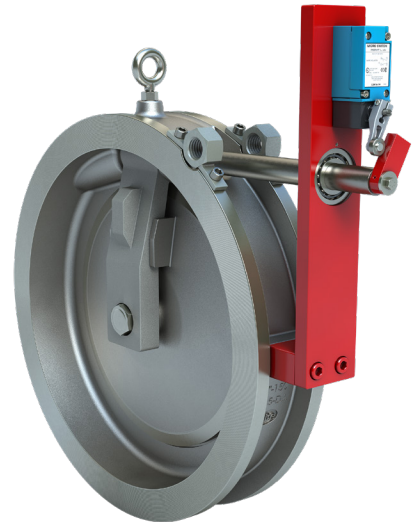
The Bray Series SA2 **check valve accessory** offers single door check valve design modification to alter flow conditions:

APPLICATION:

The purpose of equipping a standard Bray/Rite Single Door Wafer or Flanged Type Swing Check Valve with a Limit Switch, is to provide remote indication of valve position and a positive indication of flow within an automated control system environment.

GENERAL DESCRIPTION:

The Model SA2 is a standard Bray/Rite Single Door Wafer or Flanged Type Swing Check Valve that has been modified to allow the use of a limit switch to indicate the valve is in the closed position. The basic valve has a Disc/Hinge assembly connected to a positive hexagonal drive Shaft which extends through the Body. The Shaft is supported by the Body at one end, a Stainless-Steel Seal Bushing in the center and by a Ball Bearing at the end. The Ball Bearing is used in the Bracket to provide support and to reduce friction. O-Rings seal the Shaft, Seal Bushings and the Body to prevent leakage.



SPECIAL APPLICATION SERIES SA2
LIMIT SWITCH
CHECK VALVE ACCESSORY



MATERIAL OPTIONS¹

Body	ASTM A 216 WCB*
Hinge	ASTM A351-CF8M
Seat (optional)	ASTM A240-304
Spring	ASTM A313-316
Spacer	ASTM A479-316
Shaft	F316 under 4", and ASTM A564-630 (17-4 PH) above 4"
Plug	Steel (or as per body)
Lock Nut	Steel Zinc Plated
Eye Bolt	Steel Zinc Plated
Name Plate	SS316
Disc	ASTM A351-CF8M
Rivet	Steel Zinc Plated
O-Ring (optional)	Buna / EPDM / Teflon / TES / Viton
Disc Nut	Stainless Steel
Seal Bushing	ASTM A479-316
O-Ring	Buna / EPDM / Teflon / TES / Viton
O-Ring	Buna / EPDM / Teflon / TES / Viton

Bracket	Steel
Socket Head Screw	Steel Zinc Plated
Dowel Pin	Steel Zinc Plated
Ball Bearing	Steel
Set Screw	Steel Zinc Plated
Set Screw	Steel Zinc Plated
Actuator	Steel
Limit Switch	Electrostatic Epoxy Coated Zinc (Housing)
Socket Head Screw	Steel Zinc Plated

Note: ¹Materials available in ASME and EN grades.
 * Other materials available: A126-CLB, A395, A351-CF8M, Monel, Alloy 20, 254 SMO.
 All external components can be offered in SS where required.
 * Previous Models before July 2024 may have included slightly different material configurations/parts callout lists.