

# SPECIAL APPLICATION RITE SERIES SA6 FOOT VALVE WITH BASKET CHECK VALVE ACCESSORY



## OVERVIEW

The Bray Series SA6 foot check valve with basket accessory is designed to strain out debris prior to entry so valve can close as intended. and maintain pump prime.

## SPECIFICATIONS

<b>Size Range</b>	NPS 2" to 12" 50mm to 300mm
<b>Temperature Range</b>	Pending Model Selected
<b>Operating Pressure</b>	Pending Model Selected
<b>Body Style</b>	Wafer Type Valves
<b>Compatibility</b>	Bray 210 Series
<b>Leakage Rate</b>	API 598

## APPLICATIONS

> Water

## MEDIA

> Water

## DESIGN FEATURES

The Bray Series SA6 check valve accessory offers single door check valve design.

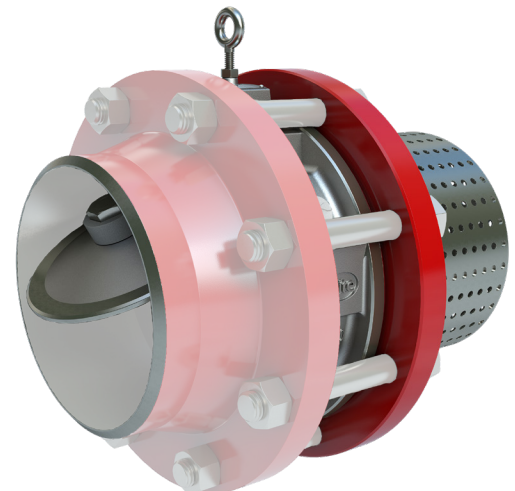
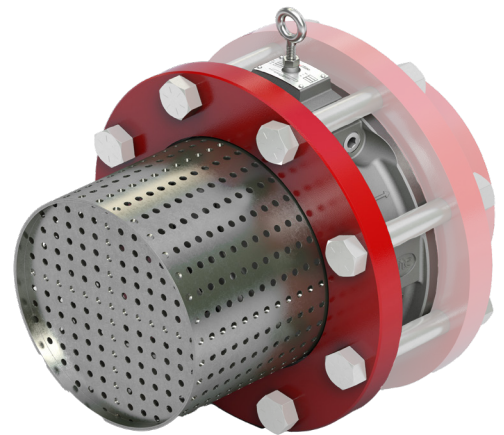
### APPLICATION:

The purpose of equipping a standard Bray/Rite Single Door Check Valve with an Inlet Strainer basket, is to filter impurities to the line to ensure valve remains in desired open/closed position, assisting downstream pump to maintain its prime. They are commonly found in pump suction applications at the beginning of a pipeline in a suction lift application.

### GENERAL DESCRIPTION:

A Model SA6 is a standard wafer Bray/Rite Single Door Check Valve which has been fitted with an inlet strainer. Foot valves act like check valves but have an open end with a shield or screen over it to block debris from entering the line. The valve opening is designed to be larger than the line itself, minimizing head loss.

**\*NOTE** Transparent items shown to the right for illustration purpose only to display connection. Customer must supply all transparent items.



**SPECIAL APPLICATION RITE SERIES SA6  
FOOT VALVE WITH BASKET  
CHECK VALVE ACCESSORY**



**MATERIAL OPTIONS<sup>1</sup>**

<b>Body</b>	ASTM A216 WCB*
<b>Hinge</b>	ASTM A351-CF8M
<b>Seat (Optional)</b>	ASTM A240 304
<b>Spacer</b>	ASTM A479-316
<b>Pin</b>	ASTM A479-316
<b>Plug</b>	Steel (or as per body)
<b>Lock Nut</b>	Steel Zinc Plated
<b>Eye Bolt</b>	Steel Zinc Plated
<b>Name Plate</b>	SS316
<b>Disc</b>	ASTM A351-CF8M
<b>Rivet</b>	Steel Zinc Plated
<b>O-Ring (Optional)</b>	Buna / EPDM / Teflon / TES / Viton
<b>Flange</b>	Steel or stainless steel (as per customer requirement)
<b>Gaskets</b>	As per O-Ring material
<b>Basket</b>	Steel or stainless steel (as per customer requirement) usually follows body material

**Note:** <sup>1</sup> Materials available in ASME and EN grades.  
Basket supplied with 1/4" perforations, and 11/32" centers.  
\* Previous Models before July 2024 may have included slightly different material configurations/parts callout lists.  
\* Other materials available: A126 CLB, A395, A351-CF8M, Monel, Alloy 20, Hastelloy, 254SMO, Titanium.  
All external components can be offered in SS where required.  
All external components can be offered in SS where required